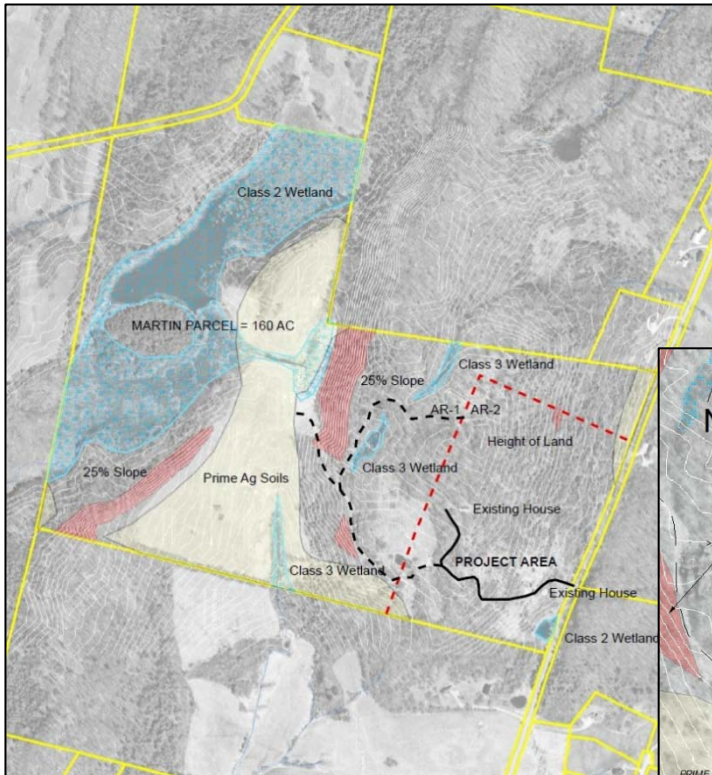
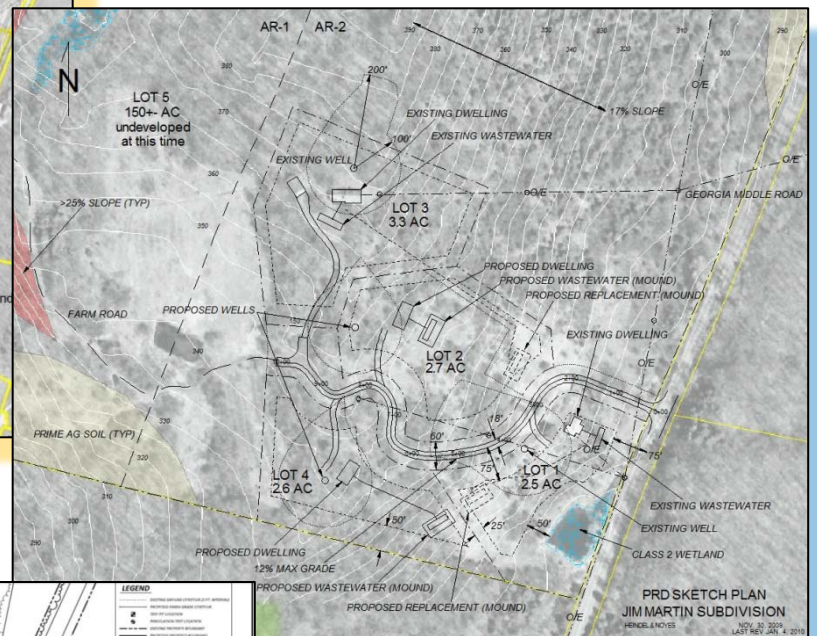


# James Martin Subdivision, Georgia, Vermont

Tony and Scott prepared a subdivision plan for the first phase of development for a 160 acre rural parcel in Georgia, working directly for the landowner. Work started with a resource assessment by Tony, identifying with a site walk and existing GIS mapping the resource sensitivity for various sections of the land. Scott conducted preliminary soil testing for on-site wastewater to confirm where individual or community systems might be located. Tony then evaluated the town plan, zoning, and subdivision regulations, and provided the owner with a comprehensive evaluation of his development options. The owner met with town officials to confirm his best option and proceeded through the preliminary review process. Tony then coordinated a final wetland delineation and evaluation for the two effected wetlands and provided the owner with recommended deed covenants. Scott and Tony coordinated their plan work with boundary surveying by TDH Surveying & Design. Shelley Gustufson provided the wetland delineation.



Resource Assessment



Sketch Plan

Final Site Plan

