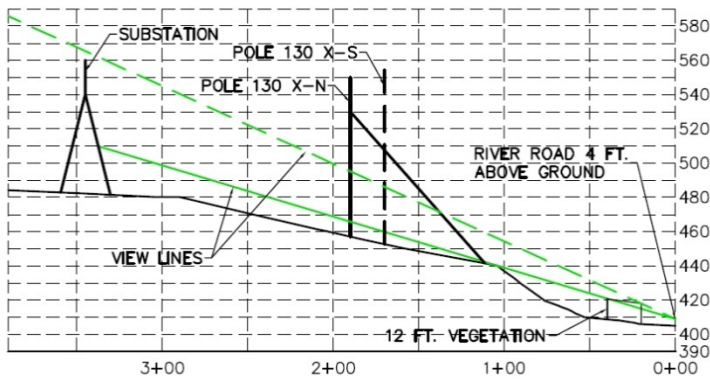


## Visual Analysis of Electric Transmission Line before Vermont Public Service Board

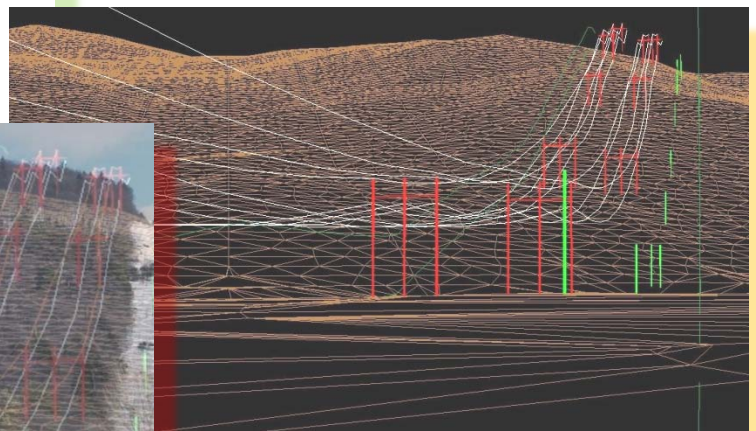
Tony and Scott prepared an aesthetic impact analysis and pre-filed testimony for a landowner in southern Vermont who was contesting a condemnation order before the Vermont Public Service Board for VELCO's Southern Loop project. Scott created a three dimensional model of the mountainous terrain with the proposed transmission towers and line. Using this model, he was able to 1) create sight lines to prove visibility of the transmission line and 2) simulate several camera views of the model with the correct perspective to accurately superimpose over digital photographs. Tony worked with Michael C. Lawrence, Landscape Architect, who digitally rendered the model over the photograph. Tony directed the overall effort, coordinated with the owner's attorney, and provided his analysis of the aesthetic impacts under the "Quechee Lakes" framework used in Act 250 and Act 248 cases.



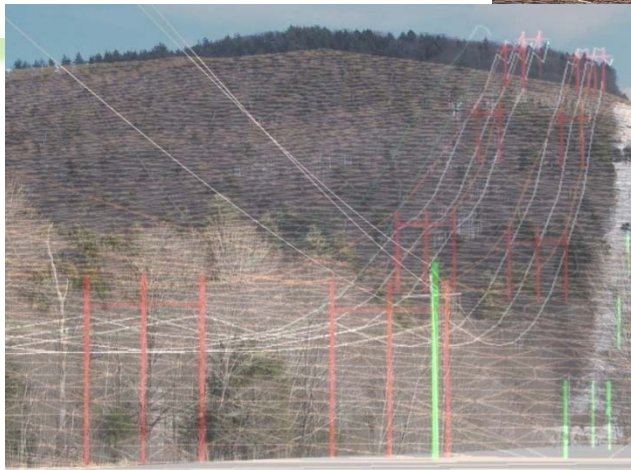
Sight Line



3D Model



"Stick" Rendering



Final Rendering by Michael C. Lawrence, Landscape Architect (with permission)



Proposed View looking North/Northeast/East from River Road below Existing ROW